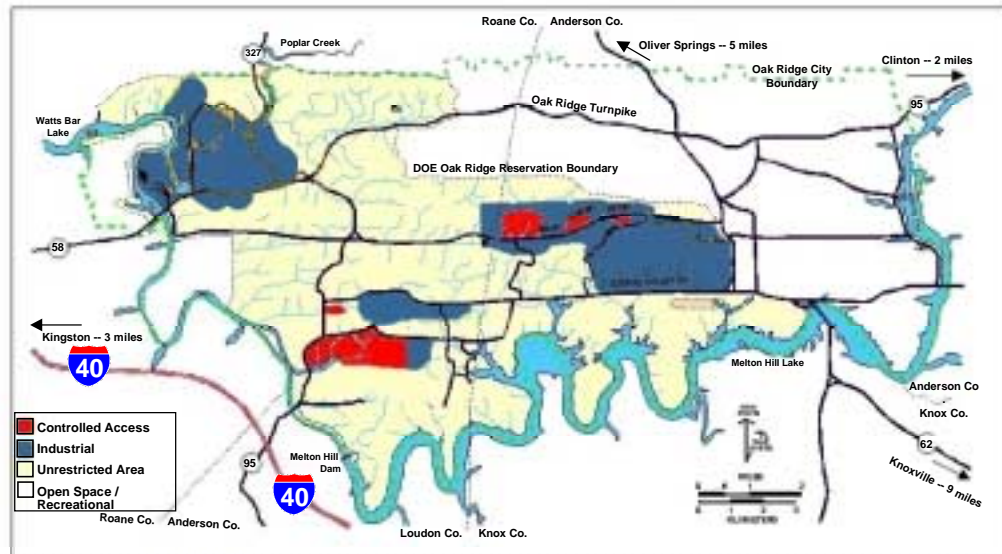


OAK RIDGE COMPLETION

Of the approximately 35,000 acres that constitute the Reservation, suspected or known contamination exists only on the 5,200 acres where research and production operations took place. The remaining 30,000 acres are uncontaminated and thus do not require remediation. Their use remains unrestricted.



Oak Ridge Reservation Planned End Uses

We have a clear picture of what the Reservation will look like when cleanup is complete. After meeting from February 1997 through June 1998, a volunteer citizens' group—the End Use Working Group—made recommendations for end uses for contaminated areas, provided the rationale for their recommendations, and discussed the need for long-term stewardship. The final plans for the contaminated portions of the Reservation are summarized below.

ORNL will continue to operate as a world-class research facility. The EM mission is to complete cleanup as quickly and safely as possible.

Y-12 will continue to operate, fulfilling its national security mission. The EM mission is to complete cleanup as quickly and safely as possible.

There is no ongoing mission at ETTP; therefore the EM mission is to accomplish cleanup for use as a private sector industrial park.

The David Witherspoon 901 and 1630 sites and the Atomic City Auto Parts site will be industrial sites. The EM mission is to complete appropriate cleanup actions.

Following are more detailed descriptions of what will be accomplished by Fiscal Year (FY) 2008 and FY 2015. These descriptions are preceded by a listing of the major accomplishments by FY 2003, which serve as a springboard and demonstrate substantial progress toward accelerated completion.

ACCOMPLISH BY 2003

- Complete ORNL Main Plant Surface Impoundments sediment removal.
- Complete design of Upper East Fork Poplar Creek (UEFPC) Building 9201-2 Water Treatment System.
- Complete Boneyard/Burnyard (in Bear Creek Valley) excavation and waste disposal.
- Complete Burial Ground D capping in Bear Creek Valley.
- Complete design of Solid Waste Storage Area 5 cap in the Melton Valley Burial Grounds.
- Complete Melton Valley hydrofracture injection and monitoring wells plugging and abandonment.
- Complete excavation of Intermediate Holding Pond in Melton Valley.
- Complete K-1070-A Burial Ground excavation at ETTP.
- Complete contract award for process equipment removal for the K-25/K-27 buildings (Phase II of the overall project).

ACCOMPLISH BY 2008

- Complete Melton Valley cleanup to abate ongoing releases and restrict access to the burial grounds.
- Excavate the retrievable TRU waste in Melton Valley.
- Isolate hydrologically the Melton Valley burial grounds.
- Remove contaminated soil in the top 10 feet in the Melton Valley industrial areas that are above risk levels.
- Demolish buildings at ETTP for which title has not been transferred.
- Remove all legacy waste, UF₆ cylinders, and scrap yard materials at ETTP.
- Excavate all ETTP soil in the top 10 feet that poses an unacceptable risk to an industrial worker. Soil at depths greater than 10 feet will be removed if it is a significant source of contamination to groundwater.
- Complete cleanup of the David Witherspoon 901 and 1630 Sites in Knoxville and the Atomic City Auto Parts site in Oak Ridge.
- Complete groundwater treatment system installations at Building 9201-2 and at the East End Volatile Organic Compound plume located at Y-12.
- Complete disposal of all legacy waste.

ACCOMPLISH BY 2015

- Complete cleanup of the ORNL main plant area (Bethel Valley watershed) for industrial use at the main plant, reactor sites, and all other industrial areas, and for unrestricted use elsewhere.

- Complete surface water remediation to achieve water quality consistent with the state's stream use classification (e.g., recreation and fish and aquatic life).
- Decontaminate the Graphite Reactor and operate it as a historic monument open to the public for tours. Demolish the other inactive reactors.
- Excavate contaminated soil in the top 2 feet in Bethel Valley that is above risk levels or at any depth that significantly contributes to groundwater contamination.
- Clean up the Y-12 main plant area (UEFPC watershed) to allow industrial use; maintain additional security restrictions in the western portion of the National Nuclear Security Administration Complex.
- Clean up the Y-12 waste disposal area (Bear Creek Valley watershed) to abate on-going releases and restrict access to the burial ground areas.
- Isolate hydrologically the Melton Valley and Bethel Valley burial grounds with multilayer caps.
- Close the EMWMF onsite disposal cell with a multilayer cap.
- Demolish facilities in the EM Program at Y-12 and Bethel Valley.

GROUNDWATER RECORDS OF DECISION

EM Mission completion is defined to be when cleanup field activities are finished in 2015. Subsequent to this will be a period of monitoring to ensure remedial effectiveness. The documentation of successful closure will be provided in final groundwater records of decision. These records of decision will consider the effectiveness of all of the actions taken in the previous interim records of decision and will include the final action needed, including land use controls, to complete remediation. For ETTP, the groundwater decision is planned for 2003.

LONG-TERM STEWARDSHIP

Following cleanup, some contaminants will remain in place which will require long-term stewardship activities to ensure the long-term protection of human health and the environment. These activities include surveillance, maintenance, information management, monitoring, and the enforcement of institutional controls (e.g., dredging restrictions, fish consumption advisories, and land use restrictions). DOE will be responsible for long-term stewardship on the Oak Ridge Reservation. For the Offsite Projects, the State of Tennessee will be responsible for long-term stewardship. Plans to make the transition from remediation to long-term stewardship will be prepared and implemented.